

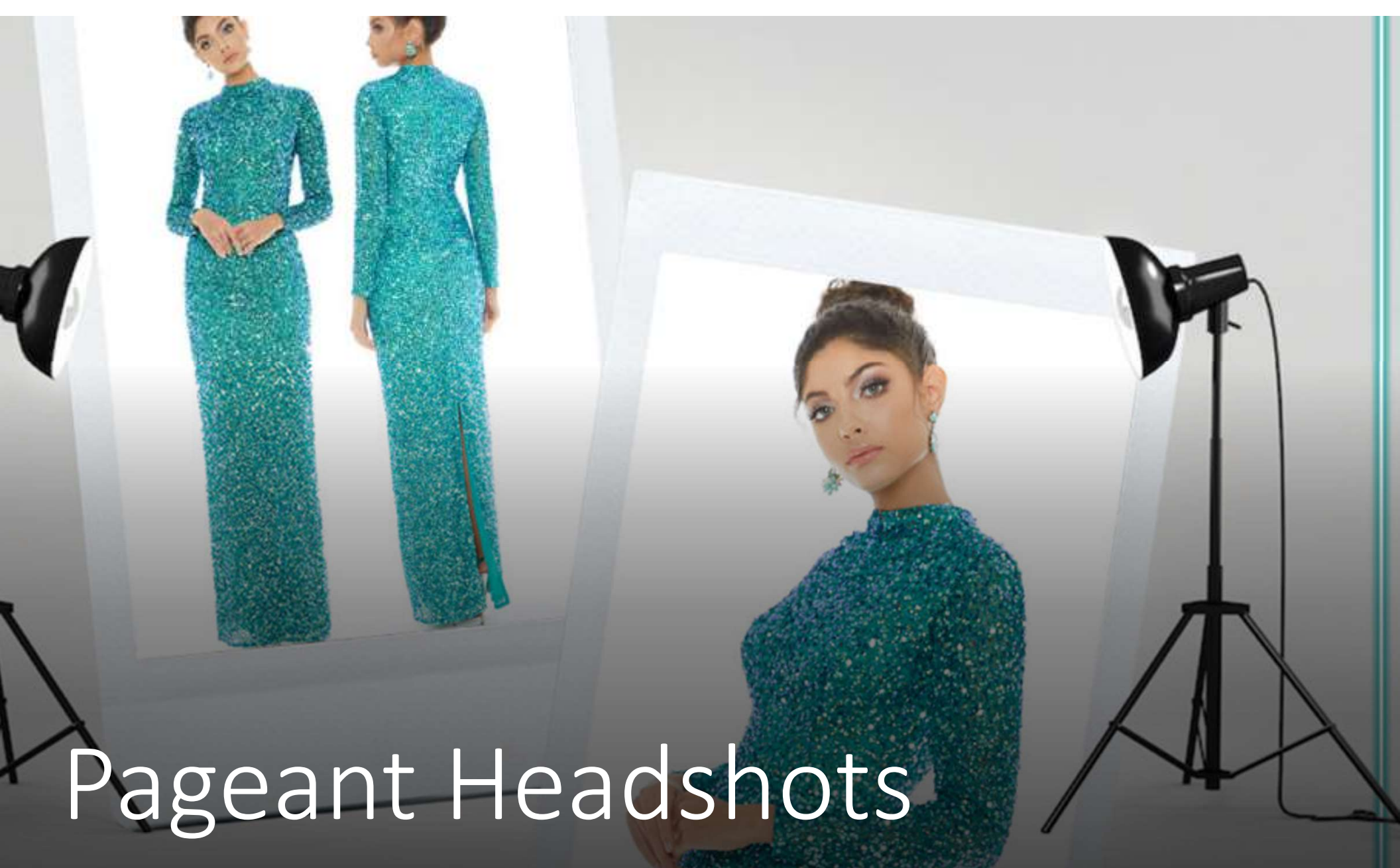


PAGEANT COACH CERTIFICATION

MODULE: PAGEANT PHOTOSHOOTS

Developed by: Lady Trenette Wilson, NAUEP CEO and Founder
Contributing Pageant Consultant: Ocielcia Gibson-Sprowl, Miss Black USA 2011

© 2023. Trenette Wilson. All rights reserved.



Pageant Headshots

PAGEANT PHOTOS

One of the most important tools a pageant contestant has is their pageant “headshot”. How they wear their hair, what makeup they use, and which photographer will capture their true beauty all determine the judge’s first impression and how far the contestant will go.

The pageant photos depend on the type of pageant.

- Natural and Scholarship
- Semi Glitz
- Glitz





WHY A PAGEANT PHOTOSHOOT?

Most pageants will require a headshot for various uses such as:

Program booklet

Social media

Website

Press/Interviews

Online outlets

PHOTO SUBMISSION OVERVIEW

Each pageant will have varying rules for pageant photos. Be sure to review all the rules before submitting your photos.

- Confirm the deadline.
- Confirm the photo size requirements.
- Confirm the place to send the photo.
- Know what type of photo.
- Be sure the photo matches the type of pageant the contestant is entering.

Pageant photos must be...



Be Authentic



Match the Pageant
Brand

When
Coaching
your client
about
photography,
it is
important for
you to...



Build relationships with
photographers



Familiarity with your city
and places to go to take
photoshoots



Relationship with fashion
designers, seamstresses,
personal shoppers,
hairstylists, and makeup
artist

Understanding Pageant Headshots

Pageant headshots are an introduction of a contestant to the pageant world.

It should capture your clients:

1. Personality
2. Beauty sense
3. Style

If done right, one photo can place your contestant in the winner's circle. A bad one can do just the opposite. When working with clients, inform them of the importance of keeping their headshot as natural as possible. The judges want to see their beauty in its simplest form, so skip the long lashes, ombre eyebrows, and stiletto nails.

Encourage contestants to keep the photoshoot production of high quality but keep themselves beautiful and simple.

Headshots should be...

- Clean and Elegant.
- Make sure the lighting compliments the setting.
- Find out how many outfits your client will need.
- Select complimentary colors.
- Concentrate on hair, makeup, and accessories.





GLITZ PAGEANTS

Glitz pageants focus heavily on physical beauty and are very competitive. Children 0-12 years old and adults.

- Heavy makeup
- False eyelashes
- Hair extensions
- Spray tan
- Elaborate outfits embellished with sequin, rhinestones, and decorations.
- Competitive and even complex dance routines, etc.
- Highly competitive.

Usual entry fees:

\$50 to \$500

NATURAL OR SCHOLARSHIP PAGEANT

Natural pageants focus more on the natural beauty of the contestant and emphasis a more wholesome look and more age-appropriate look for children.

- Minimal makeup
- No hair pieces, especially for children
- Toned-down clothes that are age-appropriate
- Focus more on communication
- Social skills
- Less complex talent category

Usual entry fees:

\$80 - \$200



SEMI GLITZ

*A combination of the Glitz and
Natural/Scholarship pageant.*

*Includes some hair and makeup,
but much less of it and less
sequin and rhinestones.*



GLITZ TOPPER

A glitz topper is a hair accessory, usually blingy and colorful during a contestant photoshoot.

- Place it near the hairline so it is easily visible.
 - Use a different topper during the pageant.
-
- Make sure it does not distract from the face.
 - A custom topper will cost approximately \$150.00





Photoshoot Poses

- Pay attention to your hands
- Make sure photos matches the pageant
- No busy prints, colors, or textures



Straight to Camera Pose

- *Most common.*
- *Focus on your eyes and smile.*
- *Energy and personality shine through.*
- *Contestant looking straight at the camera.*



Chin to Shoulder Pose

- *Contestant's face leaning slightly toward the shoulder.*
- *Don't turn your head too far forward.*
- *Do not lower your chin.*
- *Do not raise your shoulders.*



Unusual or $\frac{3}{4}$ Pose

- *Contestant holds their hands to their face.*
- *Longer shot of the subject.*



Hands to Chin

- *Contestants face learning slightly toward the shoulder.*
- *Don't turn your head too far forward.*
- *Do not lower chin.*
- *Do not raise your shoulders.*

Side to Camera Pose

- *Make a connection with your eyes.*
- *Your body is turned to the side and your face facing forward.*



Suggesting a Photographer

Before you suggest a photographer:

- Visit their website and closely review their photos
- Visit their social media
- Google their name
- Encourage contestants to spend money for a professional photographer
- The only exception to simplicity is the glitz headshot.
- GO ALL OUT!



THANK YOU!

